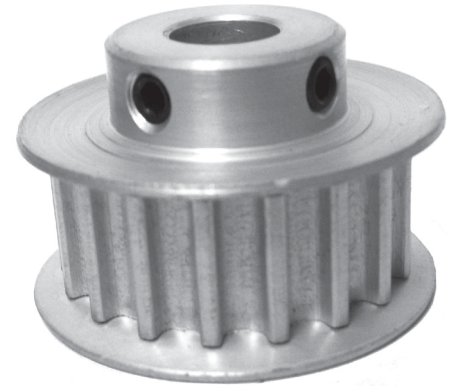


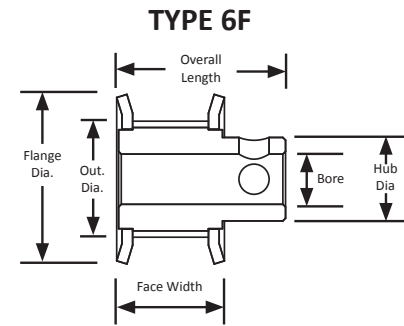
POWERHOUSE™ HTD® TIMING PULLEYS

5 mm Pitch
For 9 mm Wide Belts
Hub and Flanges
Aluminum
Clear Anodized
Metric Finished Bore

METRIC TIMING PULLEY



Part Number	No. of Teeth	Type	Pitch Dia. (mm)	Out. Dia. (mm)	Flange Dia. (mm)	Bore (mm)	Face Width (mm)	Overall Length (mm)	Hub Dia. (mm)	Key Way
12-5M09M6FA6	12	6F	19.1	18.0	22.2	6.0	13.9	20.2	11.1	1 x M3
13-5M09M6FA6	13	6F	20.7	19.6	23.8	6.0	13.9	20.2	12.7	1 x M3
14-5M09M6FA6	14	6F	22.2	21.1	25.4	6.0	13.9	20.2	12.7	2 x M3 @ 90°
15-5M09M6FA6	15	6F	23.8	22.7	27.0	6.0	13.9	20.2	14.3	2 x M3 @ 90°
16-5M09M6FA6	16	6F	25.4	24.3	27.8	6.0	13.9	20.2	14.3	2 x M3 @ 90°
17-5M09M6FA8	17	6F	27.0	25.9	30.2	8.0	13.9	20.2	15.9	2 x M4 @ 90°
18-5M09M6FA8	18	6F	28.6	27.5	31.8	8.0	13.9	20.2	17.5	2 x M4 @ 90°
19-5M09M6FA8	19	6F	30.2	29.1	33.3	8.0	13.9	20.2	19.1	2 x M4 @ 90°
20-5M09M6FA8	20	6F	31.8	30.7	34.9	8.0	13.9	20.2	20.6	2 x M4 @ 90°
22-5M09M6FA8	22	6F	35.0	33.9	38.1	8.0	13.9	20.2	23.8	2 x M4 @ 90°
24-5M09M6FA8	24	6F	38.2	37.1	41.3	8.0	13.9	21.8	25.4	2 x M4 @ 90°
25-5M09M6FA8	25	6F	39.8	38.7	42.9	8.0	13.9	21.8	25.4	2 x M4 @ 90°
26-5M09M6FA8	26	6F	41.4	40.2	44.5	8.0	13.9	21.8	27.0	2 x M4 @ 90°
28-5M09M6FA8	28	6F	44.5	43.4	47.6	8.0	13.9	21.8	30.2	2 x M4 @ 90°
30-5M09M6FA8	30	6F	47.8	46.6	50.8	8.0	13.9	21.8	30.2	2 x M4 @ 90°
32-5M09M6FA8	32	6F	50.9	49.8	54.0	8.0	13.9	21.8	31.8	2 x M4 @ 90°
34-5M09M6FA8	34	6F	54.1	53.0	57.2	8.0	13.9	21.8	35.0	2 x M4 @ 90°



B&B Manufacturing is proud to be a contributing member of the Power Transmission Distributors Association, Mechanical Power Transmission Association, and the Power-Motion Technology Representatives Association. The power of these associations lies in the development of professional standards in the industry.

